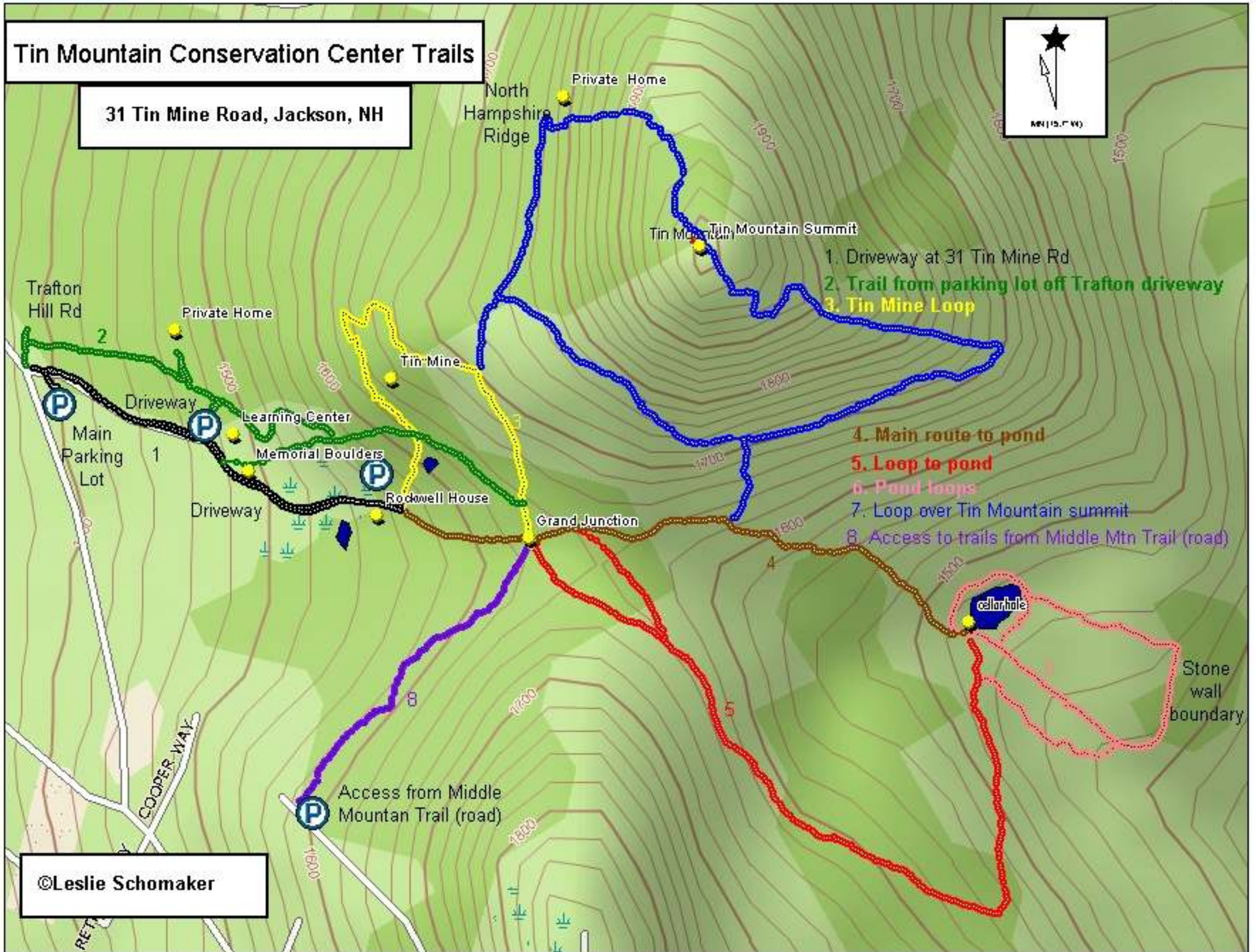


# Tin Mountain Conservation Center Trails

31 Tin Mine Road, Jackson, NH



- 1. Driveway at 31 Tin Mine Rd
- 2. Trail from parking lot off Trafton driveway
- 3. Tin Mine Loop
- 4. Main route to pond
- 5. Loop to pond
- 6. Pond loops
- 7. Loop over Tin Mountain summit
- 8. Access to trails from Middle Mtn Trail (road)

©Leslie Schomaker

